

# 'Broaster'<sup>®</sup> Pressure Fryer – 1800

## Standard Features

- **Fast and productive** – specifically designed for High volume production, cooks up to 40 pieces of fresh bone-in chicken per load in under 10 minutes\*.
  - **Unique Pressure Activated Cover Locking Mechanism** – quick closing and opening single action sealing including a pressure activated cover locking mechanism or safety and ease of use.
  - **Proven round cooking well design** – engineered for more uniform heat distribution, durability, and efficiency; no cold spots or corners. Large capacity provides more room for product, minimizes sticking, and ensures delicious, superior quality food.
  - **Fully Welded Cooking Well** – made from durable 300 Series Stainless Steel.
  - **Easy to operate** – Temp-N-Time™ feature offers the capability to pre-program Up to 10 different cook cycles for quick and easy prep of various menu items. Solid-state controller is backed by a 2-year warranty.
  - **Unique Auto Comp™ feature** – automatically adjusts cooking time to accommodate for varying sizes and temperatures of loads.
  - **Automatic cook cycle counter** - monitors production between filtering.
  - **Built-in filter system** – provides quick, easy, and safe cooking oil filtration; no heated fittings to disconnect.
- Touch screen controller option available.**



## Specifications

Primary construction is of Stainless Steel built on powder coated steel frame with chrome-plated front levelling feet. Rear legs are fitted with casters on electric models and Stainless Steel feet on gas fired models.

Round cooking well with 18 kg cooking oil capacity operates between 12-14psi pressure at temperatures up to 190°C.

Triple-redundant safety system is featured consisting of stainless steel relief valve, stainless steel splash guard and single action patented cam lock cover system with pressure regulator interlock.

Single action combined pressure regulator valve/remote timer control, drain valve interlock and pressure activated cover locking mechanism.

All ensure operator convenience and safety.

Solid state Temp-N-Time™ controller provides 10 programmable cooking profiles with built-in, automatic cook-cycle counter.

Auto-Comp feature automatically adjusts cooking time dependent on size and temperature of load.

On-board integrated filtration system consists of easily accessible stainless-steel filter tray assembly. Powered by a .24 kW motor coupled to 19 litres per minute rotary gear displacement oil pump.

Equipment is covered by manufacturer's 1-year parts and labour warranty on all systems, additional 1 year on controller parts and 10-year repair warranty on cooking well.

*\*Specifications subject to change without notice*

*\*cooking time varies with product weight*



LEADERS IN FAST FOOD SYSTEMS

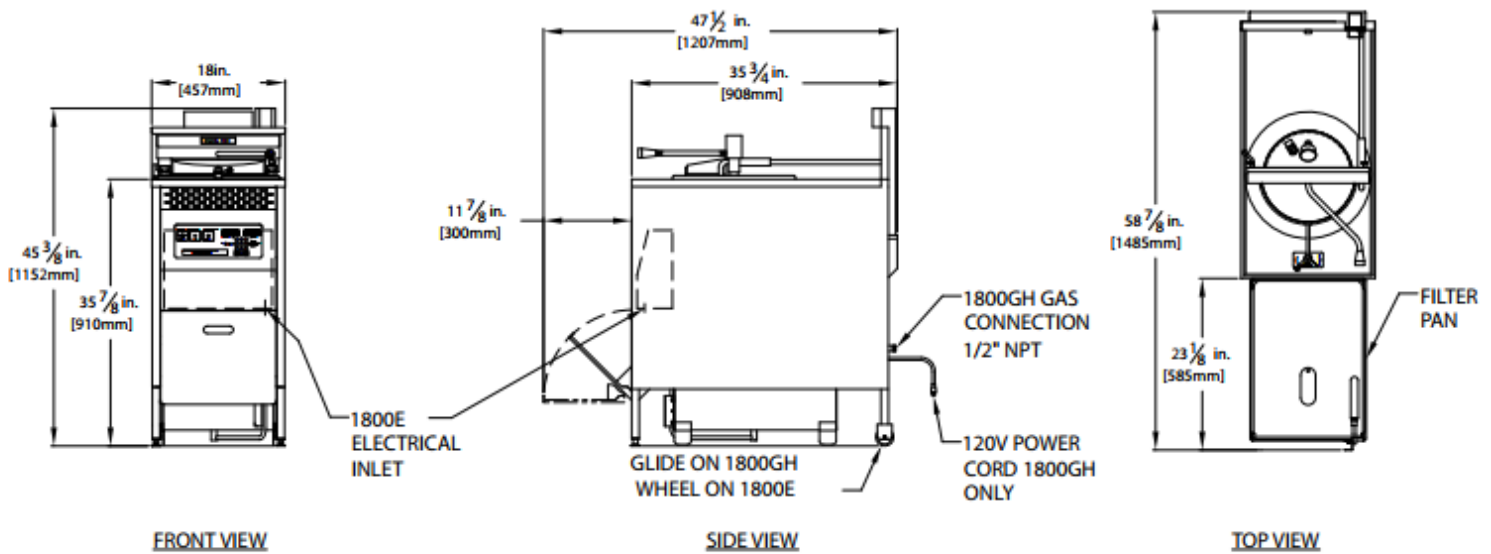
0800 62 42 14

509 Grove Road, Hastings 4122, New Zealand

info@kools.co.nz

www.kools.co.nz

# 'Broaster'<sup>®</sup> Pressure Fryer – 1800



## Dimensions

Model	Fresh Chicken Capacity	Cooking Oil Capacity	Operating Pressure	Overall Dimensions			Counter Height	Net/Ship Weight	Cubes
				W	D	H			
1800E	14 lbs./load	42 lbs.	12-14 P.S.I.	18"	35-3/4"	45-3/8"	37-5/8" (910 mm)	1800E	20.6
1800GH	80 lbs./hour			(457 mm)	(1485 mm)	(1152 mm)		219/254 lbs. 1800GH 256/291 lbs.	

## Energy Requirements

**1800E** 9.9kW Rated Heating Elements  
 - 1 phase, 208 volt, 60 hz, 48 amps  
 - 1 phase, 240 volt, 60 hz, 45 amps  
 - 3 phase, 208 volt, 60 hz, 28 amps  
 - 3 phase, 240 volt, 60 hz, 26 amps  
 No cord/plug provided.

**1800GH** 65,000 BTU Rated Burner Assembly  
 1 phase, 120 volt, 60 hz, Pump Motor Assembly  
 Attached 6 ft. cord with plug

**Main Burner Orifice**  
 Natural Gas: #24 Drill  
 LP Gas: #41 Drill

**Pilot Burner Orifice**  
 Natural Gas: 0.018"  
 LP Gas: 0.011"

\*Note: For proper operation at elevations above 2,000 feet, consult your authorized Broaster distributor for the correct orifice size.

## Additional Features

- Durable, welded, tubular steel frame is powder-coated to resist corrosion.
- Stainless steel top and side panels offer durability and easy cleaning.
- Unique stainless steel basket with a ratchet-style removable basket handle allows easier unloading of product.



LEADERS IN FAST FOOD SYSTEMS

0800 62 42 14

509 Grove Road, Hastings 4122, New Zealand

info@kools.co.nz

www.kools.co.nz